



# **FAMILY CLASSIC PLUS**

**LEGAL PROTECTION & ADVICE**

**KEY FACTS BROCHURE**



**FIRST FOR JUSTICE**



## **HOW DAS FAMILY CLASSIC PLUS CAN HELP YOU**

### **STANDARD COVERS**

- **EMPLOYMENT COVER**
- **CONSUMER CONTRACT DISPUTES**
- **PERSONAL INJURY AND CLINICAL NEGLIGENCE**
- **NEIGHBOUR PROBLEMS**
- **HM REVENUE & CUSTOMS INVESTIGATIONS**
- **LEGAL DEFENCE**
- **JURY SERVICE AND COURT ATTENDANCE**
- **IDENTITY THEFT**

### **HELPLINE SERVICES**

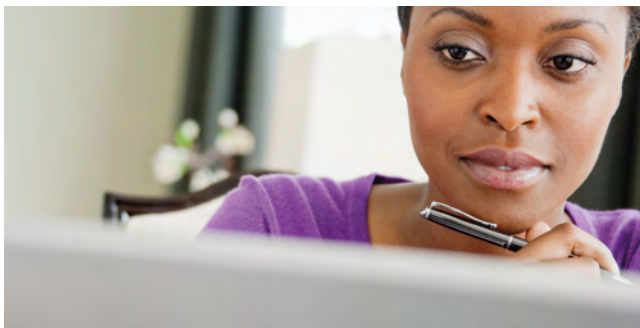
- **LEGAL ADVICE SERVICE**
- **TAX ADVICE SERVICE**
- **HEALTH AND MEDICAL INFORMATION SERVICES**
- **COUNSELLING SERVICE**
- **IDENTITY THEFT SERVICE**



## DAS FAMILY CLASSIC PLUS

**In our everyday lives, we all face situations that could require legal help if difficulties arise. A problem with your employer; an injury that is the result of someone else's negligence; a dispute over faulty goods or services; and the increasing threat of identity theft – these are all common issues that could require expert legal help to resolve.**

Unfortunately, the legal aid system is now only available to a select few. The costs of seeking professional legal advice can prevent most people pursuing or defending their legal rights. DAS Family Classic Plus is designed to provide expert legal help and assistance. Just as important, it offers the financial support to protect you and your family, so you won't have the worry of over stretching your resources.



# FREE AND CONFIDENTIAL HELPLINES FOR SUPPORT WHEN YOU NEED IT MOST

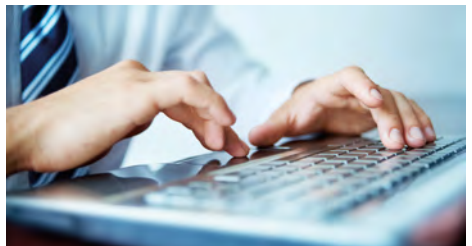
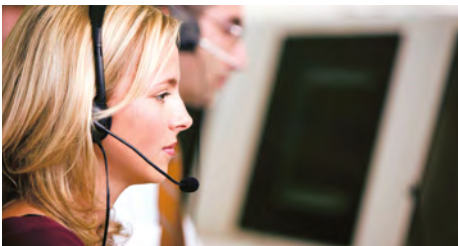
**It's impossible to predict the timing or nature of legal problems. That's why DAS Family Classic Plus gives you access to telephone advice, information and assistance services.**

Our family helpline provides access to our professional legal advice teams, staffed by solicitors and other legal advisors. You can consult them as often as you need about a personal legal issue.

Also, as the complexities of the tax system can prove a minefield for anyone, our confidential tax advice helpline can advise on any personal UK tax matter.

There is also a health and medical information service, providing useful non-diagnostic advice and information on general health issues. And there's a confidential counselling service that provides access to a qualified counsellor for all your family.

For more details, see the **Key Facts** section of this leaflet.





## SOME TYPICAL EXAMPLES OF CLAIMS

### **EMPLOYMENT DISPUTES**

Your employer dismisses you unfairly and you wish to be compensated.

### **PROPERTY PROTECTION**

Your conservatory is damaged from building work on a neighbour's roof.

### **TAX PROTECTION**

HM Revenue & Customs decide to investigate your affairs following submission of your Personal Taxation Self Assessment.

### **EMPLOYEES' LEGAL DEFENCE**

Following an accident that injures a work colleague, you are prosecuted under the Health and Safety at Work Act.

### **JURY SERVICE**

You are called to serve at a trial that lasts several weeks and wish to recover your lost salary.

### **PERSONAL INJURY**

Injury forces you to miss work – you could be entitled to damages.

### **IDENTITY THEFT**

Your credit rating is affected because someone has run up a huge debt in your name.

### **EUROPEAN COVER**

A trip abroad results in personal injury, forcing you to claim compensation through a European court.

### **CONTRACT DISPUTES**

Recently installed windows in your home were not fitted correctly and you are having difficulty in making the company make good the problem.

## POLICY SUMMARY

This policy summary gives key information about DAS Family Classic Plus which you should read. It does not contain the full terms and conditions of the policy, which you can find in the DAS Family Classic Plus policy document.

Unless otherwise agreed with the person who sells you this insurance, your cover will be valid for one year.

DAS Family Classic Plus is a legal expenses insurance contract. It will help you by providing legal advice and representation if you, or family members who always live with you, have a legal dispute that is insured under the policy.

DAS Legal Expenses Insurance Company Limited ('DAS') is the underwriter and provides the legal protection insurance under your policy. The legal advice service is provided by DAS Law Limited and/or a preferred law firm on behalf of DAS.

Features and benefits	Significant exclusions or limitations	Where to look in your policy
<p>For the incidents and circumstances listed below we will resolve an insured legal problem, either ourselves or through external lawyers and other experts that we will appoint.</p> <p>We will appoint our preferred choice of law firm to deal with your claim and will pay their costs and expenses, which include opponents' costs.</p>	<p>There are reasonable prospects of success for the duration of the claim.</p> <p>External costs are limited to £50,000.</p> <p>If you want to use your choice of law firm, any costs they incur above what we would have paid our preferred law firm will be your responsibility. We will not pay them. The amount we will pay a law firm (where acting as the appointed representative) is currently £100 per hour. This amount may vary from time to time.</p> <p>Costs incurred before we have given our written acceptance of a claim.</p> <p>Unless we agree to start legal proceedings or there is a conflict of interest, we are free to choose the representative who will help you.</p>	<p>Page 8, <b>OUR AGREEMENT (1)</b></p> <p>Page 8, <b>WHAT WE WILL PAY (a)</b></p> <p>Page 8, <b>WHAT WE WILL PAY (b)</b> and Page 8, <b>WHAT WE WILL NOT PAY</b></p> <p>Page 13, <b>POLICY EXCLUSIONS 2</b></p> <p>Page 14, <b>POLICY CONDITIONS 1 (b)</b></p>

Features and benefits	Significant exclusions or limitations	Where to look in your policy
<p><b>1 EMPLOYMENT DISPUTES</b> We will pursue and defend legal rights in a dispute arising from a contract of employment.</p>	<p>Disciplinary hearings or internal grievance procedures.</p> <p>Settlement agreements while you are still employed.</p>	<p>Page 9, <b>WHAT IS COVERED UNDER 1 EMPLOYMENT DISPUTES, PLEASE NOTE THAT</b></p> <p>Page 9, <b>WHAT IS NOT COVERED UNDER 1 EMPLOYMENT DISPUTES (b)</b></p>
<p><b>2 CONTRACT DISPUTES</b> We will pursue and defend a claim for the sale or purchase of personal goods or your principal home, or the purchase of services.</p> <p>We will pursue and defend a claim for renting your principal home as a tenant.</p>	<p>The amount in dispute must be more than £100 incl. VAT.</p> <p>Disputes arising from a loan, mortgage, pension or investment.</p> <p>A motor vehicle owned by or hired or leased to you.</p>	<p>Page 9, <b>WHAT IS COVERED UNDER 2 CONTRACT DISPUTES, PLEASE NOTE THAT</b></p> <p>Page 9, <b>WHAT IS NOT COVERED UNDER 2 CONTRACT DISPUTES (b)</b></p> <p>Page 9, <b>WHAT IS NOT COVERED UNDER 2 CONTRACT DISPUTES (d)</b></p>
<p><b>3 PERSONAL INJURY</b> We will pursue claims for accidental death or bodily injury.</p>	<p>Illness or bodily injury that happens gradually.</p>	<p>Page 9, <b>WHAT IS NOT COVERED UNDER 3 PERSONAL INJURY (a)</b></p>
<p><b>4 CLINICAL NEGLIGENCE</b> We will pursue claims where a single negligent medical act or procedure causes death or bodily injury.</p>	<p>Alleged failure to correctly diagnose the condition.</p>	<p>Page 10, <b>WHAT IS NOT COVERED UNDER 4 CLINICAL NEGLIGENCE (a)</b></p>

Features and benefits	Significant exclusions or limitations	Where to look in your policy
<p><b>5 PROPERTY PROTECTION</b> We will pursue claims following damage to your home or your personal possessions.</p> <p>Cover extends to problems such as nuisance and trespass.</p>	<p>Property damage must exceed £100.</p>	<p>Page 10, <b>WHAT IS COVERED UNDER 5 PROPERTY PROTECTION (a)</b></p>
<p><b>6 TAX PROTECTION</b> Representing your rights throughout a comprehensive investigation by HM Revenue &amp; Customs of your self assessment tax return.</p>	<p>Investigations where you are self-employed, a sole trader or in a business partnership.</p>	<p>Page 11, <b>WHAT IS NOT COVERED UNDER 6 TAX PROTECTION (a)</b></p>
<p><b>7 JURY SERVICE AND COURT ATTENDANCE</b> Payment of salary or wages while you attend a court or tribunal as requested by your appointed representative, perform jury service or are carrying out activities set out in your action plan under identity theft cover.</p>	<p>Any claim if you are unable to prove your loss.</p>	<p>Page 11, <b>WHAT IS NOT COVERED UNDER 7 JURY SERVICE AND COURT ATTENDANCE</b></p>
<p><b>8 LEGAL DEFENCE</b> Defence of criminal prosecutions and civil actions for unlawful discrimination or breaches of data protection legislation arising from your work as an employee.</p>	<p>Payment of court orders.</p> <p>Any claim relating to you driving a motor vehicle.</p>	<p>Page 13, <b>POLICY EXCLUSIONS 3</b></p> <p>Page 11, <b>WHAT IS NOT COVERED UNDER 8 LEGAL DEFENCE</b></p>



Features and benefits	Significant exclusions or limitations	Where to look in your policy
<p><b>9 IDENTITY THEFT</b></p> <p>You can access the identity theft support service through the identity theft helpline.</p> <p>We will assign you a personal caseworker who will give you telephone advice and a personal action plan to help regain your identity. We will pay various communication and administrative costs necessary to reinstate your identity.</p> <p>If legal action is necessary to reinstate your identity or defend any case brought against you by traders, we will pay the costs of a lawyer to represent you. We will cover the costs of signing statutory declarations and any loan rejection or re-application fees.</p>	<p>Fraud committed by any insured person under this policy.</p> <p>Losses arising from your business activities.</p> <p>You must take reasonable action to prevent the misuse of your identity and must notify banks and building societies as soon as possible if you become aware of anyone trying to misuse your identity.</p>	<p>Page 12, <b>WHAT IS NOT COVERED UNDER 9 IDENTITY THEFT PROTECTION (a)</b></p> <p>Page 12, <b>WHAT IS NOT COVERED UNDER 9 IDENTITY THEFT PROTECTION (b)</b></p> <p>Page 12, <b>WHAT IS COVERED UNDER 9 IDENTITY THEFT PROTECTION PLEASE NOTE THAT (i) and (iii)</b></p>
<p><b>TELEPHONE HELPLINES</b></p> <p><b>Legal advice service</b> Advice on personal legal problems under UK and EU law. Available 24 hours a day, seven days a week.</p> <p><b>Tax advice service</b> Personal taxation advice under UK law. Available 9am - 5pm, Monday to Friday, excluding public and bank holidays.</p>	<p>Advice about the law in countries outside of England and Wales is available 9am - 5pm, Monday to Friday, excluding public and bank holidays.</p>	<p>Page 2, <b>HELPLINE SERVICES</b></p>

Features and benefits	Significant exclusions or limitations	Where to look in your policy
<p><b>TELEPHONE HELPLINES CONTINUED</b></p> <p><b>Health and medical information service</b> Help and information on health and fitness. Available 9am - 5pm, Monday to Friday, excluding public and bank holidays.</p> <p><b>Counselling service</b> Our qualified counsellors provide support in dealing with worrying problems. Available 24 hours a day, seven days a week.</p> <p><b>Identity theft service</b> Advice on protecting your identity. Available 8am - 8pm, seven days a week.</p>	<p>No cover for costs of using referral services.</p> <p>Available to persons aged 18 years or over (or aged between 16 and 18 and in full-time employment).</p> <p>Need to be resident in the UK or Channel Islands.</p>	<p>Page 2, <b>HELPLINE SERVICES</b></p>
<p><b>Countries covered</b> UK for most insured incidents but cover for contract disputes (other than buying and selling of your principal home and tenancy disputes with landlords) and personal injury extends to EU member states and other specific European nations.</p>		<p>Page 4, <b>THE MEANING OF WORDS IN THIS POLICY</b></p>
<p><b>Law that applies</b> This policy is governed by the law that applies in the part of the United Kingdom, Channel Islands or Isle of Man where you normally live. Otherwise the law of England and Wales applies.</p>		<p>Page 16, <b>POLICY CONDITIONS 14</b></p>

# CANCELLATION RIGHTS

You can cancel this policy by telling us within 14 days of taking it out. Provided no claims have been made within that period, the person who sold you this policy will give you a full refund of the premium, subject to any separate charges that they may apply.

You may also cancel this policy at any time afterwards as long as you tell us at least 14 days beforehand. We can cancel this policy at any time as long as we tell you at least 14 days beforehand. If the policy is cancelled after 14 days of taking it out, subject to the terms of business between you and the person who sold you this policy, you may be entitled to a partial refund of the premium.

It is important to note that charges may apply to any refund subject to the individual terms of business between you and the person who sold you this policy. Please contact them directly for full details of charges.

# MAKING A CLAIM

**You must give DAS details of any claim as soon as possible.**

You can telephone us on **0344 893 9011** to make a claim. At this point we will not be able to tell you whether you are covered but we will pass the information you have given us to our claims handling teams and explain what to do next. Lines are open 24 hours a day, 365 days a year.

Calls may be recorded.



## HOW TO MAKE A COMPLAINT

We always aim to give you a high quality service. If you think we have let you down, you can contact us by:

- phoning **0344 893 9013**
- emailing **[customerrelations@das.co.uk](mailto:customerrelations@das.co.uk)**
- writing to the **Customer Relations Department | DAS Legal Expenses Insurance Company Limited | DAS House | Quay Side | Temple Back | Bristol | BS1 6NH**
- completing our online complaint form at **[www.das.co.uk/about-das/complaints](http://www.das.co.uk/about-das/complaints)**

Further details of our internal complaint-handling procedures are available on request.

If you are not happy with the complaint outcome or if we've been unable to respond to your complaint within 8 weeks, you can ask the Financial Ombudsman Service for a free and independent review of your complaint.

You can contact them by:

- phoning **0800 023 4567** (free from mobile phones and landlines) or **0300 123 9123**
- emailing **[complaint.info@financial-ombudsman.org.uk](mailto:complaint.info@financial-ombudsman.org.uk)**
- writing to **The Financial Ombudsman Service | Exchange Tower | London | E14 9SR**

Further information is available on their website: **[www.financial-ombudsman.org.uk](http://www.financial-ombudsman.org.uk)**

Using this service does not affect your right to take legal action.



The Financial Ombudsman's role is to assess our handling of a claim in light of the policy terms. It is not to assess the quality of legal advice. If you are unhappy with the service provided by an appointed representative the relevant complaint-handling procedure is available on request.

**DAS Head and Registered Office:  
DAS Legal Expenses Insurance Company Limited |  
DAS House | Quay Side | Temple Back | Bristol | BS1 6NH**

DAS is covered by the Financial Services Compensation Scheme (FSCS). You may be entitled to compensation from the scheme if DAS cannot meet its obligations. This will be dependent on the type of business and the circumstances of the claim. You can get more information about the compensation scheme arrangements from the FSCS website, [www.fscs.org.uk](http://www.fscs.org.uk)

**THIS PAGE HAS BEEN LEFT BLANK INTENTIONALLY**

**THIS PAGE HAS BEEN LEFT BLANK INTENTIONALLY**



Agent's address

DAS Legal Expenses Insurance Company Limited is authorised by the Prudential Regulation Authority and regulated by the Financial Conduct Authority (FRN202106) and the Prudential Regulation Authority | DAS Legal Expenses Insurance Company Limited, DAS House, Quay Side, Temple Back, Bristol BS1 6NH | Registered in England and Wales | Company Number 103274 | Website: [www.das.co.uk](http://www.das.co.uk) | DAS Law Limited is authorised and regulated by the Solicitors Regulation Authority (registered number 423113) | DAS Law Limited Head and Registered Office: North Quay, Temple Back, Bristol BS1 6FL | Registered in England and Wales | Company Number: 5417859 | Website: [www.daslaw.co.uk](http://www.daslaw.co.uk)